

BUILDING LEGACY PRACTICES FOR OUR
DENTAL PARTNERS SINCE 2008

WARRANTY

Classic Craft Dental Laboratory uses only the finest materials to craft products with nature's design principles in mind. These design features include: emergence profile, interproximal relationships, smile contour, proper occlusion, translucency, and marginal integrity. All of this adds up to shorter chair time and smiling patients. By using a TQM (Total Quality Management) approach to our system-based craft, we are able to deliver a predictable fit, finish, functionality, and aesthetic. Classic Craft's predictability gives you the comfort in knowing that every appliance you place from us will help you build a legacy practice and drive patient referrals.

WHAT WE NEED FROM YOU

We've developed systems that produce consistent restorations, delivered on time. The design of our restorations is dependent on what we receive from you. The following list ensures problem-free restorations designed to benefit your practice and patients.

CLEAR MARGINS

It is important that we see the margins clearly, whether using an impression material or a digital scanner.

BITE REGISTRATION

We advise all of our partners to include a bite registration with every case in order to understand your patient's anatomy. Take the bite registration and shade before numbing the patient. This technique will give the lab the best accuracy.

CASE NOTES

To get the best aesthetic results, send a pre-op model and/or describe your treatment plan in detail.

PHOTOS

Photos add clarity to a case and help us interpret your instructions. Send your photos to: pics@classiccraftdental.com

RUSH CASES

Call the lab at 877-552-7238 before you send your case. We'll preload your case into our system and give you an expected return date.

WHAT YOU CAN EXPECT FROM US

PROGRESS NOTIFICATIONS

We send email notifications when your case is received and when it is ready to ship. The timeline is clear.

We will have your case finished within 10 in-lab working days or 15 in-lab working days for implants and abutments. We will have your model-less ZirLifeUSA, ZirLife Aesthetic & e.max CAD cases finished in 5 in-lab working days.

DOCTOR PORTAL

You have the option to sign up for our doctor portal. The portal is used to track and manage all your cases in one place.

LABORATORY SUPPORT

We have a Technical Representative assigned to your account who can help you with any questions or needs. Our Technical Representatives can assist you chairside with shade/material choice, schedule pick-ups, conduct lunch-and-learns, and supply detailed information on our product offerings. Quality personal service is crucial to great partnerships. If you don't have a Technical Representative in your state, our highly trained laboratory staff are always ready to further assist you with all your needs about your case, our process, shade/material choice, turnaround times, supplies, billing, and scheduling pick-ups. You can reach us at 877.552.7238.



STATS TAKEN FROM PREVIOUS QUARTER

ZirLife™

ZirLifeUSA™

DENTAL CROWNS GUARANTEED FOR LIFE

NEW
PARTNERS



- ❖ >1200 mpa strength
- ❖ Medium translucency
- ❖ Light Chamfer prep with 1.5mm occlusal clearance
- ❖ Intaglio groove for better retention
- ❖ Pontic span up to 4 units
- ❖ Polished after milling to remove micro ridges
- ❖ Lifetime warranty

ZirLife™ AESTHETIC

TRANSLUCENT ZIRCONIA CROWN

- ❖ 900 mpa strength
- ❖ High translucency
- ❖ Chamfer prep with RILA and 2mm occlusal clearance
- ❖ Intaglio groove for better retention
- ❖ Pontic span up to 2 units
- ❖ Polished after milling to remove micro ridges
- ❖ Lifetime warranty



IPS e.max®

PRESSED ANTERIOR

- ❖ 450 mpa strength
- ❖ 97% clinical rating
- ❖ 96.8% survival rate

MILLED POSTERIOR

- ❖ 500 mpa strength
- ❖ 97% clinical rating
- ❖ 96.8% survival rate



IVOCAR
CLASSIC PORCELAIN
TO ARGEN
METALS (PFM)

ZirLifeUSA™
+ IPS e.max®

PORCELAIN FUSED
TO ZIRCONIA (PFZ)

FULL - CAST
RESTORATIONS

ABUTMENTS

Classic Craft Dental Lab works with all FDA-approved implant manufacturers including, but not limited to, Ti-Custom, Atlantis, Zimmer Biomet, Straumann, Nobel Biocare, and BioHorizons. We are also an Encode Empowered lab, which allows us to unlock Encode healing caps for abutment milling without using a third party.

- ❖ Custom abutment partners assume all warranties for OEM implants
- ❖ Options include: titanium, gold hue titanium, zirconia, hybrid zirconia, and one piece: screw-retained on a ti-base

Atlantis®
Provided by Dentsply Sirona Implants



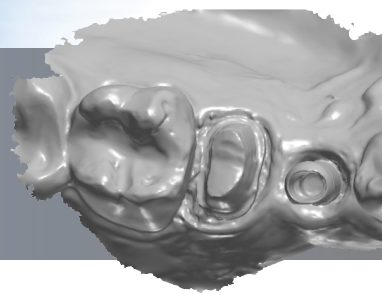
FREE SCAN BODIES

Classic Craft Dental Lab has partnered with Atlantis and Nobel Biocare to provide free scan bodies for a wide selection of implant manufacturers. Scan bodies can be used on all digital platforms. Scan bodies create a seamless transfer of unique implant placement information to us for an unmatched custom abutment and aesthetic crown result.

Left image courtesy of Dentsply Sirona, Inc.
Right image courtesy of Nobel Biocare

Atlantis®
Provided by Dentsply Sirona Implants

Nobel
Biocare™



DENTAL IMPLANT SURGICAL GUIDES

Surgical guides are easily adaptable to various clinical situations. The most common use of surgical guides is for single or multiple implants for fixed restorations. The teeth provide support, stability, and retention improving accuracy and precision when placing the implant.



- ❖ Improved accuracy and precision of implants
- ❖ Faster, simpler surgery
- ❖ Predictable restorative outcomes
- ❖ Guides the surgical instruments and implants to the proper location

CUSTOM-MILLED BARS

Classic Craft Dental Lab offers milled titanium or custom-cast bars for over dentures. We have partnered with Atlantis to offer a unique variety of options for cases that are more complex in nature. Custom bars can be paired with a semi-fixed or fixed prosthesis as dictated by your treatment plan. Custom-milled locator and Hader bars are also available. Call the lab for more information.



Atlantis®
Provided by Dentsply Sirona Implants

OUR GO-TO SOLUTION FOR FULL-ARCH RESTORATIONS



Atlantis® BridgeBase

Atlantis® BridgeBase patient-specific, screw-retained solutions are ideal for multiple-unit cases, delivering strength, aesthetics, and a streamlined workflow. Boost your case volume with total confidence.

- ❖ Patient-specific
- ❖ Envable aesthetics
- ❖ Streamlined workflows
- ❖ Total coverage



DENTURES

Premium full dentures

Digital dentures

Standard full dentures

Copy full dentures

Frameworks

Over-denture milled bars

All-on-4 restorations

REMOVABLES

DIGITAL DENTURES

Digital dentures are a new way to deliver predictable fit and comfort to your patients. These dentures will cut down on chair time by following a 3-step protocol. The digital design process allows for changes to be made by the click of a mouse. The material has a brilliant finish for maximum aesthetics while offering superior strength to processed dentures. After your patient receives the digital denture, a file is stored to be able to duplicate this denture in the future for peace of mind or as a back up for your patient to keep. There are multiple processes available to achieve the finished product, whether your patient needs their first denture, an exact copy of their existing denture, or an improvement on their existing denture. Start your journey into digital dentures by contacting your sales rep or our CAD/CAM department today!



CAST PARTIALS

All frameworks are Ni & Be free

Acrylic saddle(s)



HYBRID PARTIALS

Metal framework on the lingual for stability

Available with acrylic saddles



VALPLAST PARTIALS

Tissue colored framework



DURACETAL BENEFITS ›

- ❖ Opaque Tooth Colored or Clear
- ❖ Can be "added to" or repaired
- ❖ Snap-fit with excellent retention
- ❖ Bacteria and stain resistant with
- ❖ No odor
- ❖ Strong and durable
- ❖ Biocompatible, monomer free, and FDA approved

PARTIALS

DURACETAL™
COSMETIC APPLIANCES



CLEAR COMFORT BITE SPLINT ›

- ❖ Hard night guard fabricated from modified composite material.
 - ❖ Moldable after placing in warm water.
 - ❖ Does not contain methyl methacrylate.
- ❖ Chairside repairs can easily be made with cold-cure acrylics.

CLASSIC COMFORT H/S™ › BITE SPLINT

- ❖ Made of two layers: a 1mm soft polyurethane inner layer and a 3mm hard copolyester outer layer.
- ❖ Comes standard with a flat occlusal plane and slight opposing cusp indentation or choose your specific bite plan needs.
 - ❖ Fabricated from ISO-certified ERKODENT® copolyester and polyurethane discs.
 - ❖ BPA-free and non-allergenic.



HARD ACRYLIC BITE SPLINT ^

OTHER OFFERINGS: Hawley Retainer, Spring Retainer, Sports Guards, Lower Lingual Arch, Band & Loop, Essix Retainer, and Bleaching Tray Set

Bite Splint Care: Brush with a clean, non-abrasive gel toothpaste.

- ❖ For patients who grind and may be showing early signs of wear.
 - ❖ Vacuum formed Erkoform material.
 - ❖ Lightweight and clear.

CLEAR ALIGNERS

Now more than ever, patients are asking for a clear aligner solution. With these aligners you can expect:

- ❖ Reliable customer service and support for every case, from file upload to aligner delivery.
- ❖ Average refinement rate of 5% and up to 20% fewer aligner stages results in an ideal treatment plan.
- ❖ Intuitive software that is easy for experienced and new staff to navigate.
- ❖ Made in the USA with premium thermoformed materials.
- ❖ Three options: Xpress (12 Clear Aligners), Limited (24 Clear Aligners) or Unlimited (25+ Clear Aligners) with complimentary retainer included in all cases.
- ❖ SmileDesign Studio with an intuitive user interface keeps control in your hands and offers the flexibility to fully customize every patient's case based on your treatment preferences. Attachments, interproximal reduction (IPR), final archform shape, and tooth movement and rotation speed can all be tailored to fit your standards.



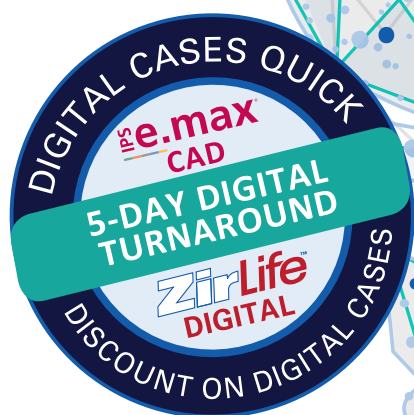
GET STARTED

Scan to visit Classic Craft
Clear Aligners and
SmileDesign Studio login



Classic Craft Dental Lab accepts intraoral scans from clinicians using digital scanning systems that have the ability to utilize the open STL format for restorations. By eliminating inbound shipping and the need to create and digitize a model, you shorten turnaround time while saving money and resources. We offer a 5-day in-lab turnaround for all ZirLifeUSA™, ZirLife™ Aesthetic and e.max® CAD model-less cases.

DIGITAL
DENTISTRY



GET STARTED

Scan to visit CCDL and learn how to add us as your preferred lab.



3SHAPE

MEDIT

CEREC
PRIMESCAN

ITERO

PLANMECA

CARESTREAM

We accept all digital platforms. If your scanner is not listed, call the lab for instructions on how to add CCDL to your scanner.

EST. 2008



877.552.7238

pics@classiccraftdental.com

2807 Roger Lacey Drive Ste. B
Savannah, GA 31404



www.classiccraftdental.com