

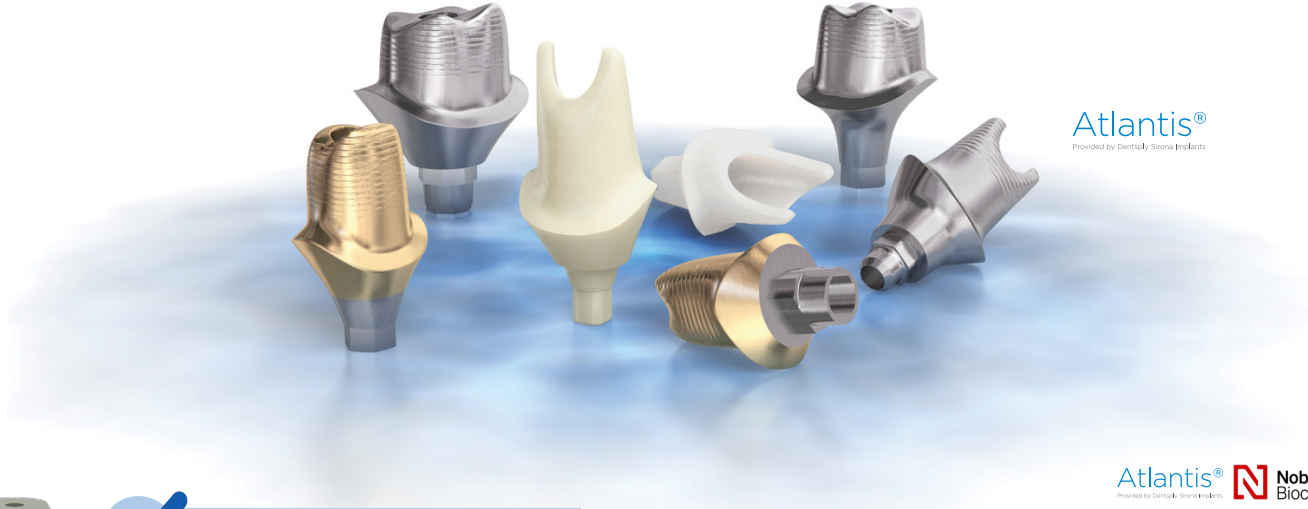


# IMPLANTS

## ABUTMENTS

Classic Craft Dental Lab works with all FDA-approved implant manufacturers including, but not limited to, Ti-Custom, Atlantis, Zimmer Biomet, Straumann, Nobel Biocare, and BioHorizons. We are also an Encode Empowered lab, which allows us to unlock Encode healing caps for abutment milling without using a third party.

- ❖ Custom abutment partners assume all warranties for OEM implants
- ❖ Options include: titanium, gold hue titanium, zirconia, hybrid zirconia, and one piece: screw-retained on a ti-base



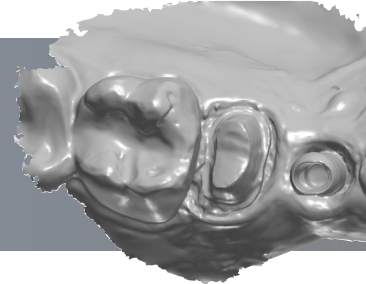
Atlantis®  
Provided by Dentsply Sirona Implants



## FREE SCAN BODIES

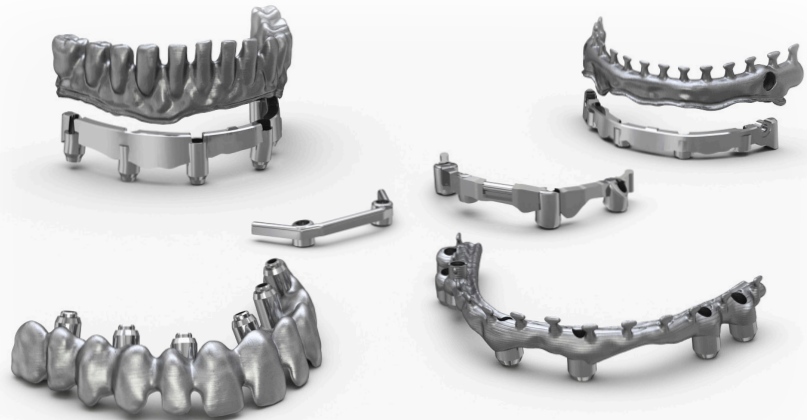
Classic Craft Dental Lab has partnered with Atlantis and Nobel Biocare to provide free scan bodies for a wide selection of implant manufacturers. Scan bodies can be used on all digital platforms. Scan bodies create a seamless transfer of unique implant placement information to us for an unmatched custom abutment and aesthetic crown result.

Atlantis® Nobel Biocare™  
Provided by Dentsply Sirona Implants



## CUSTOM-MILLED BARS

Classic Craft Dental Lab offers milled titanium or custom-cast bars for over dentures. We have partnered with Atlantis to offer a unique variety of options for cases that are more complex in nature. Custom bars can be paired with a semi-fixed or fixed prosthesis as dictated by your treatment plan. Custom-milled locator and Hader bars are also available. Call the lab for more information.



Atlantis®  
Provided by Dentsply Sirona Implants





## DENTAL IMPLANT SURGICAL GUIDES

Surgical guides are easily adaptable to various clinical situations. The most common use of surgical guides is for single or multiple implants for fixed restorations. The teeth provide support, stability, and retention improving accuracy and precision when placing the implant.



- ❖ Improved accuracy and precision of implants
- ❖ Faster, simpler surgery
- ❖ Predictable restorative outcomes
- ❖ Guides the surgical instruments and implants to the proper location

## READY TO SEND US YOUR SURGICAL GUIDES?

### FOLLOW THESE EASY STEPS TO GET STARTED

- ❖ Provide Classic Craft with the CBCT scan
- ❖ Provide scan or traditional impression of preparation arch
- ❖ Provide your desired implant brand system and size

If you have any questions or need help submitting your scans/impressions contact Dylan West at 877.552.7238 or email [dwest@classiccrafterdental.com](mailto:dwest@classiccrafterdental.com)

