

NATIONAL
FULL SERVICE

LEADER IN
DIGITAL DENTISTRY

Classic  **Craft**[®]
DENTAL LABORATORY

BUILDING LEGACY PRACTICES FOR OUR
DENTAL PARTNERS SINCE 2008



NEW PARTNERS

Classic Craft Dental Laboratory uses only the finest materials to craft products with nature's design principles in mind. These design features include: emergence profile, interproximal relationships, smile contour, proper occlusion, translucency, and marginal integrity. All of this adds up to shorter chair time and smiling patients. By using a TQM (Total Quality Management) approach to our system-based craft, we are able to deliver a predictable fit, finish, functionality, and aesthetic. Classic Craft's predictability gives you the comfort in knowing that every appliance you place from us will help you build a legacy practice and drive patient referrals.

WHAT WE NEED FROM YOU

We've developed systems that produce consistent restorations, delivered on time. The design of our restorations is dependent on what we receive from you. The following list ensures problem-free restorations designed to benefit your practice and patients.

CLEAR MARGINS

It is important that we see the margins clearly, whether using an impression material or a digital scanner.

BITE REGISTRATION

We advise all of our partners to include a bite registration with every case in order to understand your patient's anatomy. Take the bite registration and shade before numbing the patient. This technique will give the lab the best accuracy.

CASE NOTES

To get the best aesthetic results, send a pre-op model and/or describe your treatment plan in detail.

PHOTOS

Photos add clarity to a case and help us interpret your instructions. Send your photos to: pics@classiccraftdental.com

RUSH CASES

Call the lab at 877-552-7238 before you send your case. We'll preload your case into our system and give you an expected return date.

WHAT YOU CAN EXPECT FROM US

PROGRESS NOTIFICATIONS

We send email notifications when your case is received and when it is ready to ship. The timeline is clear.

We will have your case finished within 10 in-lab working days or 15 in-lab working days for implants and abutments. We will have your model-less ZirLifeUSA, ZirLife Aesthetic & e.max CAD cases finished in 5 in-lab working days.

DOCTOR PORTAL

You have the option to sign up for our doctor portal. The portal is used to track and manage all your cases in one place.

LABORATORY SUPPORT

We have a Technical Representative assigned to your account who can help you with any questions or needs. Our Technical Representatives can assist you chairside with shade/material choice, schedule pick-ups, conduct lunch-and-learns, and supply detailed information on our product offerings. Quality personal service is crucial to great partnerships. If you don't have a Technical Representative in your state, our highly trained laboratory staff are always ready to further assist you with all your needs about your case, our process, shade/material choice, turnaround times, supplies, billing, and scheduling pick-ups. You can reach us at 877.552.7238.



98%

ON-TIME CASES

98%

SUCCESS RATE

700+

CASES PER DAY

STATS TAKEN FROM PREVIOUS QUARTER

ZirLife™

ZirLifeUSA™

DENTAL CROWNS GUARANTEED FOR LIFE

CROWN
& BRIDGE

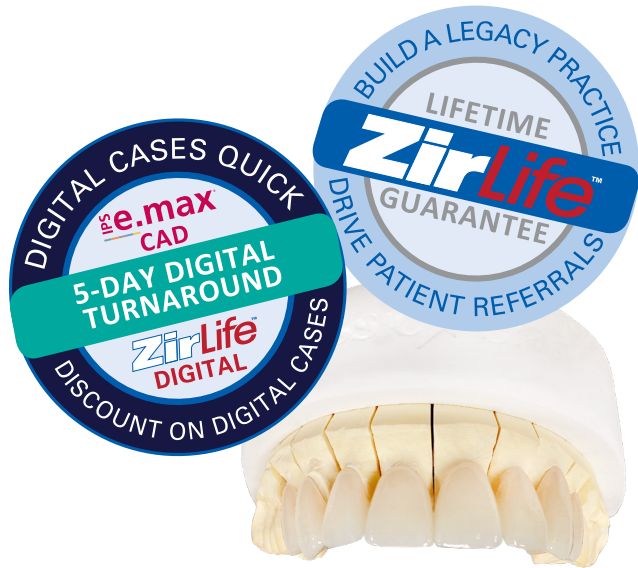


- >1200 mpa strength
- Medium translucency
- Light Chamfer prep with 1.5mm occlusal clearance
- Intaglio groove for better retention
- Pontic span up to 4 units
- Polished after milling to remove micro ridges
- Lifetime warranty

ZirLife™ AESTHETIC

TRANSLUCENT ZIRCONIA CROWN

- 900 mpa strength
- High translucency
- Chamfer prep with RILA and 2mm occlusal clearance
- Intaglio groove for better retention
- Pontic span up to 2 units
- Polished after milling to remove micro ridges
- Lifetime warranty



IPS e.max™

PRESSED ANTERIOR

- 450 mpa strength
- 97% clinical rating
- 96.8% survival rate

MILLED POSTERIOR

- 500 mpa strength
- 97% clinical rating
- 96.8% survival rate

IVOCLAR
CLASSIC PORCELAIN
TO ARGEN
METALS (PFM)

ZirLifeUSA™

+ IPS e.max™

PORCELAIN FUSED
TO ZIRCONIA (PFZ)

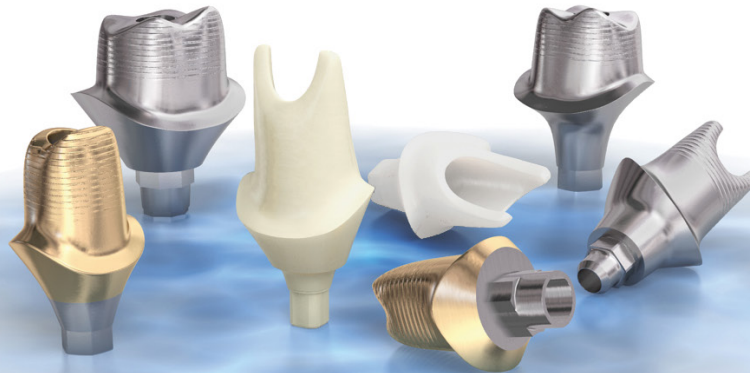
FULL - CAST
RESTORATIONS

IMPLANT

ABUTMENTS

Classic Craft Dental Lab works with all FDA-approved implant manufacturers including, but not limited to: Atlantis, Zimmer Biomet, Straumann, Nobel Biocare, and Vulcan. We are an Encode Empowered lab, which allows us to unlock Encode healing caps for abutment milling without using a third party.

- Custom abutment partners assume all warranties for OEM implants
- Options include: titanium, gold hue titanium, zirconia, hybrid zirconia, and one piece, screw-retained on a ti-base



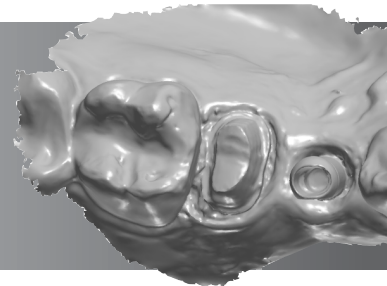
Atlantis®
Provided by Dentsply Sirona Implants

Images courtesy of Dentsply Sirona



FREE SCAN BODIES

Classic Craft Dental Lab has partnered with Atlantis to provide free scan bodies for a wide selection of implant manufacturers. Scan bodies can be used on all digital platforms. Atlantis scan bodies create a seamless transfer of unique implant placement information to us for an unmatched custom abutment and aesthetic crown result.



Atlantis®
Provided by Dentsply Sirona Implants

CUSTOM-MILLED BARS

Classic Craft Dental Lab offers milled titanium or custom-cast bars for over dentures. We have partnered with Atlantis to offer a unique variety of options for cases that are more complex in nature. Custom bars can be paired with a semi-fixed or fixed prosthesis as dictated by your treatment plan. Custom-milled locator and Hader bars are also available. Call the lab for more information.



877.552.7238 Fax: 912.355.1007



pics@classiccraftdental.com



classiccraftdental.com



2807 Roger Lacey Drive Ste. B, Savannah, GA 31404



REMOVABLES

DENTURES



Premium full dentures
Standard full dentures
Frameworks
Over-denture milled bars
All-on-4 restoration

PARTIALS

HYBRID PARTIALS

Metal framework on the lingual for stability
Available with acrylic saddles



DURACETAL™ COSMETIC APPLIANCES

Opaque Tooth Colored or Clear
Biocompatible, monomer free, and FDA approved



CAST PARTIALS

All frameworks are Ni & Be free
Acrylic saddle(s)



VALPLAST PARTIALS

Tissue colored framework



CLEAR COMFORT BITE SPLINT ›

- Hard night guard fabricated from modified composite material.
 - Placed in warm water before inserting in the mouth.
 - Does not contain methyl methacrylate.
- Chairside repairs can easily be made with cold-cure acrylics.



CLASSIC COMFORT H/S™ › BITE SPLINT

- Made of two layers: a 1mm soft polyurethane inner layer and a 3mm hard copolyester outer layer.
- Standard feature with a flat occlusal plane and slight opposing cusp indentation or choose your specific bite plan needs.
 - Fabricated from ISO-certified ERKODENT® copolyester and polyurethane discs.
 - BPA-free and non-allergenic.

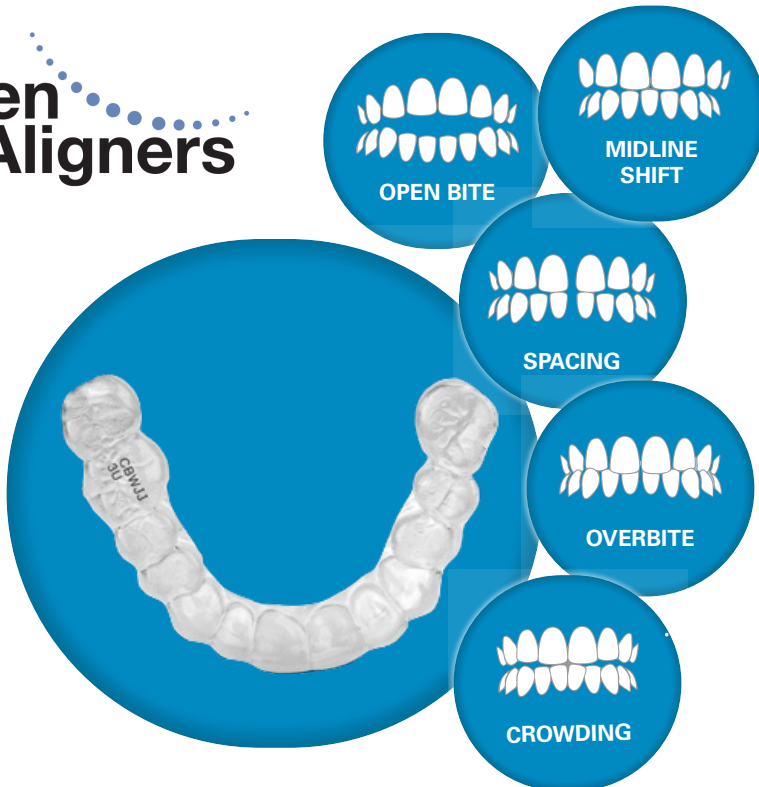


HARD ACRYLIC BITE SPLINT ^

- For patients who grind and may be showing early signs of wear.
 - Vacuum formed Erkoform material.
 - Lightweight and clear.

Bite Splint Care: Brush with a clean non-abrasive gel toothpaste.

Argen
Clear **Aligners**



\$25 OFF

Your first
Argen Aligner Treatment

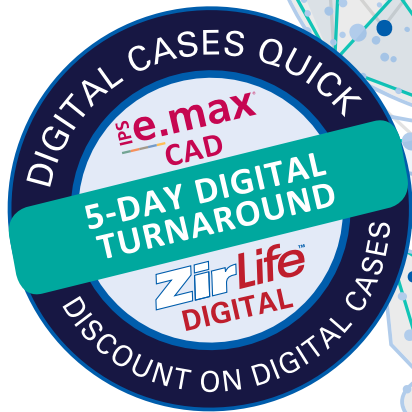
USE CODE
"ALIGNER25"
IN NOTES SECTION

GET STARTED

Scan to visit CCDL
Argen Clear Aligners.



Classic Craft Dental Lab accepts intraoral scans from clinicians using digital scanning systems that have the ability to utilize the open STL format for restorations. By eliminating inbound shipping and the need to create and digitize a model, you shorten turnaround time while saving money and resources. We offer a 5-day in-lab turnaround for all ZirLifeUSA™, ZirLife™Aesthetic and e.max® CAD cases. We also include a discount on your invoice for each scanned case sent to our lab.



GET STARTED

Scan to visit CCDL and learn how to add us as your preferred lab.



3SHAPE
TRIOS 4

MEDIT
i700
i500

CEREC
OMNICAM
PRIMESCAN

ITERO
ELEMENT

PLANMECA
EMERALD

CARESTREAM
9600

EST. 2008



Classic Craft

DENTAL LABORATORY



877.552.7238 Fax: 912.355.1007



pics@classiccraftdental.com



2807 Roger Lacey Drive Ste. B
Savannah, GA 31404

www.classiccraftdental.com

